



SapiSelco m3it



Cable ties with
stainless steel tooth

Cable ties with stainless steel tooth.



Bar code	Code	Description	mm. Sizes	max fixing Ø	Average opening load in daN	Pcs. x pack.	Pcs. x cart.
8014748301918	MET. 2.2102R	nat.	100x2,5	24	18	100	15000
8014748301925	MET. 2.2302R	nat.	100x2,5	24	18	1000	15000
8014748301932	MET. 2.2B02R	nat.	100x2,5	24	18	1000	10000
8014748301949	MET. 2.2105R	nat.	200x2,5	55	18	100	10000
8014748301956	MET. 2.2305R	nat.	200x2,5	55	18	1000	10000
8014748303721	MET. 2.2B05R	nat.	200x2,5	55	18	1000	4000
8014748301963	MET. 2.2110R	nat.	140x3,5	36	28	100	10000
8014748301970	MET. 2.2310R	nat.	140x3,5	36	28	1000	10000
8014748301987	MET. 2.2B10R	nat.	140x3,5	36	28	1000	8000
8014748301994	MET. 2.2111R	nat.	200x3,5	55	28	100	6000
8014748302007	MET. 2.2311R	nat.	200x3,5	55	28	1000	6000
8014748303738	MET. 2.2B11R	nat.	200x3,5	55	28	1000	4000
8014748302014	MET. 2.2112R	nat.	280x3,5	80	28	100	6000
8014748302021	MET. 2.2312R	nat.	280x3,5	80	28	1000	6000
8014748303745	MET. 2.2B12R	nat.	280x3,5	80	28	1000	4000
8014748302038	MET. 2.2123R	nat.	186x4,5	51	40	100	5000
8014748302045	MET. 2.2323R	nat.	186x4,5	51	40	1000	5000
8014748302052	MET. 2.2B23R	nat.	186x4,5	51	40	1000	3000
8014748302069	MET. 2.2140R	nat.	290x4,5	76	40	100	5000
8014748302076	MET. 2.2340R	nat.	290x4,5	76	40	1000	5000
8014748302083	MET. 2.2126R	nat.	360x4,5	101	40	100	4000
8014748302090	MET. 2.2326R	nat.	360x4,5	101	40	1000	4000
8014748302106	MET. 2.2539R	nat.	220x7,5	56	80	50	2000
8014748302113	MET. 2.2739R	nat.	220x7,5	56	80	500	2000
8014748302120	MET. 2.2534R	nat.	360x7,5	101	80	50	1500
8014748302137	MET. 2.2734R	nat.	360x7,5	101	80	500	1500



8014748302144	MET. 3.2102R	black	100x2,5	24	18	100	15000
8014748302151	MET. 3.2302R	black	100x2,5	24	18	1000	15000
8014748302168	MET. 3.2B02R	black	100x2,5	24	18	1000	10000
8014748302175	MET. 3.2105R	black	200x2,5	55	18	100	10000
8014748302182	MET. 3.2305R	black	200x2,5	55	18	1000	10000
8014748303752	MET. 3.2B05R	black	200x2,5	55	18	1000	4000
8014748302199	MET. 3.2110R	black	140x3,5	36	28	100	10000
8014748302205	MET. 3.2310R	black	140x3,5	36	28	1000	10000
8014748302212	MET. 3.2B10R	black	140x3,5	36	28	1000	8000
8014748302229	MET. 3.2111R	black	200x3,5	55	28	100	6000
8014748302236	MET. 3.2311R	black	200x3,5	55	28	1000	6000
8014748303769	MET. 3.2B11R	black	200x3,5	55	28	1000	4000
8014748302243	MET. 3.2112R	black	280x3,5	80	28	100	6000
8014748302250	MET. 3.2312R	black	280x3,5	80	28	1000	6000
8014748303776	MET. 3.2B12R	black	280x3,5	80	28	1000	4000
8014748302267	MET. 3.2123R	black	186x4,5	51	40	100	5000
8014748302274	MET. 3.2323R	black	186x4,5	51	40	1000	5000
8014748302281	MET. 3.2B23R	black	186x4,5	51	40	1000	3000
8014748302298	MET. 3.2140R	black	290x4,5	76	40	100	5000
8014748302304	MET. 3.2340R	black	290x4,5	76	40	1000	5000
8014748302311	MET. 3.2126R	black	360x4,5	101	40	100	4000
8014748302328	MET. 3.2326R	black	360x4,5	101	40	1000	4000
8014748302335	MET. 3.2539R	black	220x7,5	56	80	50	2000
8014748302342	MET. 3.2739R	black	220x7,5	56	80	500	2000
8014748302359	MET. 3.2534R	black	360x7,5	101	80	50	1500
8014748302366	MET. 3.2734R	black	360x7,5	101	80	500	1500

PACKAGING • Bags of 100 pcs. and 1,000 pcs. • **Box of 1,000 pieces, packaged with head facing upwards sizes 100x2,5 - 200x2,5 - 140x3,5 - 200x3,5 - 280x3,5 - 186x4,5.** • OUTER CARTON MEASUREMENTS: 30x20x60 cm. We can supply heat-resistant, UV-stabilised, V0 self-extinguishing, and coloured cable ties to order. The terms and conditions of sale outlined in our catalogue apply.

Cable ties with stainless steel tooth for the most advanced applications.



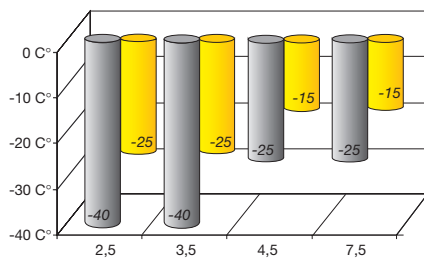
Cable ties with stainless steel tooth

SAPISELCO PRODUCTION LAUNCHES THE NEW M.E.T CABLE TIE

The metal tooth sets the tie strap in the desired position, to suit a continuous range of fixing diameters. The smooth tie strap remains flexible and resistant at low temperatures and in humidity free conditions. The result of an exclusive, fully automatic production process that only SapiSelco could develop.

... higher flexibility, higher resistance

COMPARATIVE COLD-RESISTANCE TEST

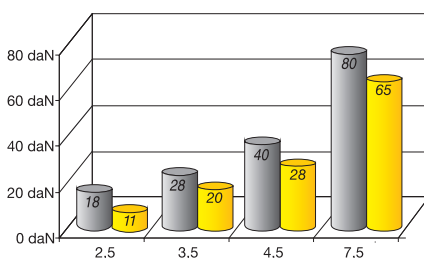


Cold resistance tests confirm higher levels of resistance than normal ties.

ME.T
Nylon



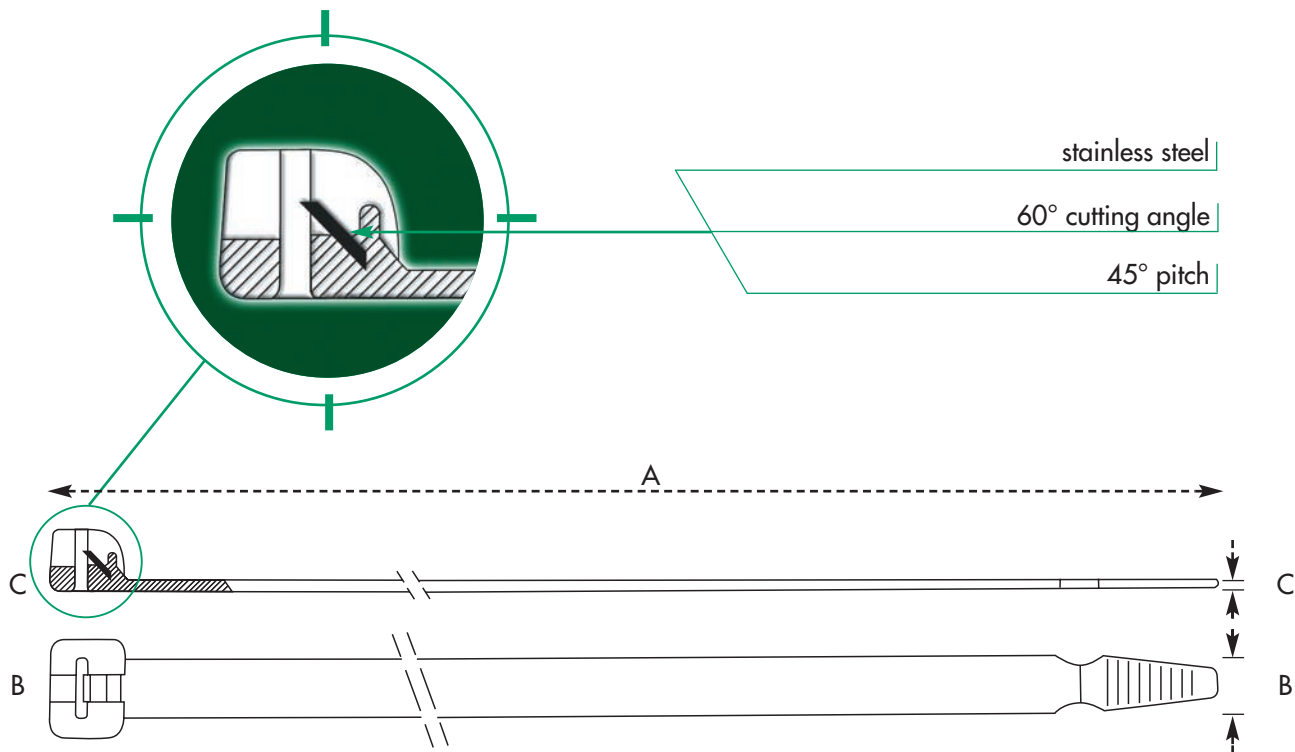
COMPARATIVE TIE OPENING TEST



Tests comparing the tie fastener confirm higher levels of resistance than normal ties.

ME.T
Nylon





Underwriters Laboratories
UL (U.S.A.)
file E 160935



Italian Institute
Quality Trademark
EN 50146
CA01.00172=CA01.00175



DIR. 73/23/CEE
93/68/CEE



RINA
n. ELE/35802 CS

Technical Characteristics

Characteristics	SAPISELCO method	Unit	Cable-ties width: mm.							
			2,5		3,5		4,5		7,5	
			min	max	min	max	min	max	min	max
Opening load	MAF/06	daN	13	18	22	28	35	42	54	80
Fragility	MAF/02-b	°C	-20		-20		-20		-20	
Minimum application temperature	MAF/03	°C	-40		-40		-25		-25	
Resistance time to an applied flame	MAF/08	SEC	5		5		10		20	
Self-extinguishing	MAF/05 with reference to UL94 classification	/	V2		V2		V2		V2	

Nominal Measurements

Size	Unit	Dimensional tolerance	Data			
B - Width		± 5%	2,5	3,5	4,5	7,5
C - Thickness	mm	± 5%	0,9	1	1,1	1,5
A - Length		± 2%	100 200	140 200 280	186 290 360	220 360

- The sizes and measurements contained in this price list are expressed in millimetres. Opening loads are expressed in daN (1 daN ≈ 1 Kg).
- The figures given are mean values at 23°C and 50% R.H.
- Data subject to change.

NATURAL METAL-TOOTH CABLE TIE DISPLAY KIT - mat

BAR CODE 8014748302700	Sizes included in the kit	PCS per bag	Packages per kit
	100 x 2,5	100	10
	200 x 2,5	100	10
	140 x 3,5	100	10
	200 x 3,5	100	8
	280 x 3,5	100	10
	186 x 4,5	100	8
	290 x 4,5	100	8
	360 x 4,5	100	8
	220 x 7,5	50	8
Code MET.A.2			

Cable ties with stainless steel tooth

NATURAL METAL-TOOTH CABLE TIE DISPLAY KIT - mat

BAR CODE 8014748302717	Sizes included in the kit	PCS per bag	Packages per kit
	100 x 2,5	100	10
	200 x 2,5	100	10
	140 x 3,5	100	10
	200 x 3,5	100	8
	280 x 3,5	100	10
	186 x 4,5	100	8
	290 x 4,5	100	8
	360 x 4,5	100	8
	220 x 7,5	50	8
Code MET.A.3			

Individual packs carry the EAN bar code.

met PACKAGING

Product technical information is printed on all the ME.T Packs, indicating the product size and code, the number of pieces, opening loads, cable diameter, and the production batch number. Each pack carries the EAN bar code.

